



CLASSICAL NUMIS

Auction of British India, Republic India

AUCTION

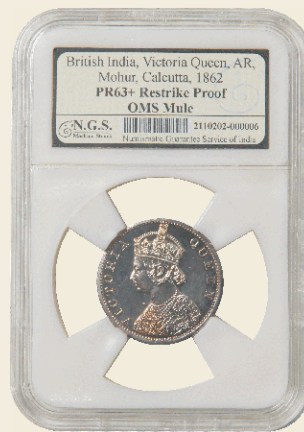


Saturday, 13th

Hotel Comfort
Ahmedabad



12



36



21



22



35



37



65



134



141



152





CLASSICAL NUMISMATIC GALLERY

Auction of British India, Republic India, Foreign, Coins and Paper Money

AUCTION 4

on

Saturday, 13th August 2011, 6:30 pm onwards.

at

Hotel Comfort Inn President

C. G. Road, Navrangpura,

Ahmedabad - 380009 (Gujarat).

in conjunction with

3rd

Ahmedabad Coins & Currency Fair

(3 Day Coin Fair from 13th to 15th August 2011)

: conducted by :

CLASSICAL NUMISMATIC GALLERY

A Proprietary Concern established by Shatrughan Saravagi

(Antiques Trading Licence No. 001)

105, 3rd Eye Complex, C. G. Road, Panchvati,

Ahmedabad - 380 006. Gujarat, INDIA.

Tel : +91 (0) 79 2646 4850, +91 (0) 79 2646 4851

Fax : +91 (0) 79 2646 4852

Email : info@classicalnumismaticgallery.com

Web : www.classicalnumismaticgallery.com

Date of Auction : Saturday, 13th August 2011, 6:30 pm onwards.

Public View : By Appointment – From 5th to 12th August 2011, 12:00 to 6:00 pm, at our registered office.
At the Coin Fair – 13th August 2011, 12:00 to 4:00 pm

Registered Office :

Classical Numismatic Gallery

105, 3rd Eye Complex, C. G. Road, Panchvati, Ahmedabad – 380 006.

Tel : +91 (0) 79 - 2646 4850 / +91 (0) 79 - 2646 4851.

Fax : +91 (0) 79 - 2646 4852

E-mail : info@classicalnumismaticgallery.com

Website : www.classicalnumismaticgallery.com

Order of Sale

British India.....	Lots	1 - 173
Republic of India.....	Lots	174 - 212
Foreign Coins.....	Lots	213 - 232
Paper Money.....	Lots	233 - 269

Lot Pickup : Lot Pickup will be Conducted at the Coin Fair on 14th and 15th August 2011.
between 11:00 am to 5:00 pm.

Buyer's Premium is **11.3% on Hammer** (including Service Tax)
plus 1% Vat on Gold and Silver Items and 5% on other metal Items. (No Vat on Paper Money)

Antiques Trading Licence No. 001

VAT TIN : 24073501598

CST TIN : 24573501598

Service Tax No : AARPJ0464ASD001

Our Bankers :

HDFC Bank, Panchvati Branch, Ahmedabad, A/c No. 15672560000671

RTGS / NEFT IFSC code : HDFC0001567

ICICI Bank, Shahibaug Branch, Ahmedabad, A/c No. 029405500365

RTGS / NEFT IFSC code : ICIC0000294

A/c Name : Classical Numismatic Gallery

Currency of Sale : Indian Rupee (₹)

Academic Advisor for Cataloguing **Dr. Shailendra Bhandare**. (University of Oxford, UK)

Catalogue Prepared by **Gev Kias** & the team of **Classical Numismatic Gallery**.

Please Note : Items **over 100 years old** cannot be taken out of India without the permission of the Director General, Archeological Survey of India, Janpath, New Delhi - 110 011.

Catalogue Price : ₹ 200

British India



1. **William IV, Gold Mohur, 1835, Bombay Mint**, obv. head to right, no incuse initials on the truncation of the neck, continuous legend rev. lion statant to left in front of a palm, restrike proof. *Very Rare. (Pr 17)*

Realised : ₹

Estimate: ₹ 2,25,000 - 2,50,000



2. **William IV, Silver 1/4 Rupee, 1835, Bombay Mint**, obv. No initials, rev. 20 Berries. *Scarce, About Extremely Fine. (Pr 96)*

Realised : ₹

Estimate: ₹ 4,000 - 5,000

3. **William IV, Silver 1/4 Rupee, 1835, Bombay Mint**, obv. No initials, rev. 20 Berries. *Scarce, Very Fine. (Pr 96)*

Realised : ₹

Estimate: ₹ 3,500 - 4,500



4. **William IV, Silver 1/4 Rupee, 1835, Bombay Mint**, obv. No initials, rev. 20 Berries. *Scarce, Fine + To Very Fine. (Pr 96)*

Realised : ₹

Estimate: ₹ 3,000 - 4,000



5. **William IV, Silver 1/4 Rupee (2), 1835, Bombay Mint**, obv. No initials, rev. 20 Berries. *Scarce, Fine + to Very Fine. (Pr 96). (2 coins)*

Realised : ₹

Estimate: ₹ 6,000 - 8,000



6



7



8



6. William IV, Silver 1/4 Rupee, 1835, **Calcutta** Mint, obv. 'F' incuse, rev. 19 Berries. *Rare, About Very Fine. (Pr 89)*

Realised : ₹

Estimate: ₹ 3,500 - 4,500

7. William IV, Silver 1/4 Rupee, 1835, **Calcutta** Mint, obv. 'F' incuse, rev. 19 Berries. *Rare, Very Fine. (Pr 89)*

Realised : ₹

Estimate: ₹ 4,000 - 5,000

8. William IV, Silver 1/2 Rupee, 1835, **Calcutta** Mint, obv. 'F' incuse, rev. 20 Berries. *Very Fine +, Rare.*

Realised : ₹

Estimate: ₹ 8,000 - 10,000



9



10



11



9. William IV, Silver 1/2 Rupee, 1835, **Bombay** Mint, obv. No initials, 19 Berries. *Extremely Fine, Rare.*

Realised : ₹

Estimate: ₹ 10,000 - 15,000

10. William IV, Silver 1/2 Rupee, 1835, **Calcutta** Mint, obv. 'R.S.' incuse, rev. 20 Berries. *Extremely Fine, Rare.*

Realised : ₹

Estimate: ₹ 10,000 - 15,000

11. William IV, Silver 1/2 Rupee, 1835, **Calcutta** Mint, obv. 'F' incuse, rev. 19 Berries, some scratches on rev. *About Very Fine, Scarce.*

Realised : ₹

Estimate: ₹ 8,000 - 10,000



12



13



12. William IV, Silver Rupee, 1835, counter stamped, Crown and 'PM' for **Port Mozambique**. Slabbed and graded by ICG as *EF 40, Very Rare.*

Realised : ₹

Estimate: ₹ 25,000 - 30,000

Coinage in Mozambique began with its earliest conquerors, Portugal. As usual Spanish reals counter stamped (ME or MR) for use in the country). Flourishing trade was brought in other nations who followed the same method. The Maria Theresa thaler became popular in East Africa during the 19th century, also widespread along with the East African coast was the Indian rupee. According to a decree of November 24, 1888, the non-Portuguese silver coins were ordered counter marked, first with a crowned 'PM' and then, following the accession of a new king in Portugal, with an uncrowned: 'PM'.

Hence we find two types of counter stamps one with crown and 'PM' and another with just 'PM'. Mozambique's own coinage started only in 1909. The coin in offer is a very rare and ICG certified.

13. William IV, Silver Rupee, 1835, **Bombay** Mint, obv. No initials, 19 Berries. *Extremely Fine, Scarce.*

Realised : ₹

Estimate: ₹ 10,000 - 15,000



14



15



14. William IV, Silver Rupee, 1835, **Calcutta** Mint, obv. 'F' raised, rev. 19 Berries. *Rare, Very Fine +. (Pr 37)*

Realised : ₹

Estimate: ₹ 4,000 - 5,000

15. William IV, Silver Rupee, 1835, **Calcutta** Mint, obv. 'F' incuse, rev. 19 Berries, Two leaves, *Rare, Extremely Fine. (Pr 36)*

Realised : ₹

Estimate: ₹ 4,000 - 5,000



16



17



16. William IV, Silver Rupee, 1835, **Calcutta** Mint, obv. 'F' incuse, rev. 19 Berries, Bud leaves. *Scarce, Extremely Fine. (Pr 34)*

Realised : ₹

Estimate: ₹ 3,500 - 4,500

17. William IV, Silver Rupee, 1835, **Calcutta** Mint, obv. 'F' incuse with dot after 'F', rev. 19 Berries, Bud leaves. *Rare, Extremely Fine, Unlisted.*

Realised : ₹

Estimate: ₹ 4,000 - 5,000



18



19



18. William IV, Silver Rupee, 1835, **Bombay** Mint, obv. No initials, rev. 20 Berries. *Very Fine, Toned. (Pr 40)*

Realised : ₹

Estimate: ₹ 3,000 - 4,000

19. William IV, Silver Rupee, 1835, **Calcutta** Mint, obv. 'F' incuse, rev. 19 Berries, Bud leaves. *Very Fine, Unlisted.*

Realised : ₹

Estimate: ₹ 3,000 - 4,000



20. William IV, Silver Rupee, 1835, Calcutta Mint, obv. 'R.S.' incuse, rev. 20 Berries, Bud leaves. *Scarce, Fine +. (Pr 32)*

Realised : ₹

Estimate: ₹ 3,000 - 4,000

21. **Victoria Queen**, Gold Mohur, 1841, continuous legend, Calcutta Mint, obv. No initials, (KM 461.1). *Extremely Fine, Very Rare.*

Realised : ₹

Estimate: ₹ 1,25,000 - 1,30,000

22. **Victoria Queen**, Gold Mohur, 1841, Calcutta Mint, divided legend, 'W.W.' incuse on truncation of the neck, (KM 462.1). with luster. *About UNC. (Pr 22)*

Realised : ₹

Estimate: ₹ 1,00,000 - 1,20,000



23. **Victoria Queen**, continuous legend, Silver (4), Two Annas, 1/4 Rupee, 1/2 Rupee and Rupee, 1840-1841, Rare as a set. *Very Fine to Extremely Fine. (4 coins)*

Realised : ₹

Estimate: ₹ 8,000 - 10,000



24. **Victoria Queen**, continuous legend, Silver (4), Two Annas, 1/4 Rupee, 1/2 Rupee and Rupee, 1840-1841, Rare as a set. *About Very Fine to Extremely Fine. (4 coins)*

Realised : ₹

Estimate: ₹ 8,000 - 10,000



25. **Victoria Queen**, continuous legend, Silver 1/4 Rupee, 1840, obv. English head, rev. 20 Berries. *Scarce, About Extremely Fine. (Pr 98)*

Realised : ₹

Estimate: ₹ 2,000 - 2,500

26. Victoria Queen, continuous legend, Silver 1/4 Rupee, 1840, **Calcutta** Mint, obv. India head, rev. 34 Berries, with Crescent. *Rare, About Extremely Fine. (Pr 103)*

Realised : ₹

Estimate: ₹ 4,000 - 5,000

27. Victoria Queen, continuous legend, Silver 1/4 Rupee, 1840, **Madras** Mint, obv. 'S' incuse, rev. 20 Berries. *Rare, About Very Fine. (Pr 100)*

Realised : ₹

Estimate: ₹ 4,000 - 5,000



28. Victoria Queen, continuous legend, Silver 1/2 Rupee, 1840, **Bombay** Mint, obv. No initials, rev. 19 Berries. *Scarce, Very Fine. (Pr 76)*

Realised : ₹

Estimate: ₹ 3,500 - 4,500



29. Victoria Queen, divided legend, Silver (4), Two Annas, 1/4 Rupee, 1/2 Rupee and Rupee, 1840 – 1841, *Rare as a set. About Very Fine to A UNC. (4 coins)*

Realised : ₹

Estimate: ₹ 7,000 - 9,000



30. Victoria Queen, divided legend, Silver (4), Two Annas, 1/4 Rupee, 1/2 Rupee and Rupee, 1840 – 1841, *Rare as a set. About Very Fine to A UNC. (4 coins)*

Realised : ₹

Estimate: ₹ 7,000 - 9,000



31



32

31. Victoria Queen, divided legend, Silver 1/4 Rupee, 1840, **Madras** Mint, obv. 'W.W.S.' raised, rev. 10 Berries. *Rare, Very Fine +. (Pr 110)*

Realised : ₹

Estimate: ₹ 2,000 - 2,500

32. Victoria Queen, divided legend, Silver 1/4 Rupee, 1840, **Calcutta** Mint, obv. 'W.W.' raised, rev. 10 Berries, 4 with short cross bar. *Rare, About Very Fine. (Unlisted)*

Realised : ₹

Estimate: ₹ 2,000 - 2,500



33



34

33. Victoria Queen, divided legend, Silver 1/2 Rupee, 1840, **Madras Mint**, obv. 'S.W.W.' incuse, 'S' in relief rev. 24 Berries. *Very Rare, About Very Fine. (Pr 82)*

Realised : ₹

Estimate: ₹ 4,500 - 5,000

34. Victoria Queen, divided legend, Silver Rupee, 1840, **Madras Mint**, obv. 'W.W.B.' raised, rev. 28 Berries. *Scarce, Very Fine +. (Pr 60)*

Realised : ₹

Estimate: ₹ 2,500 - 3,000



35



36

35. **Victoria Queen**, Gold Mohur, 1862, **(KM 480)**. *Extremely Fine, Rare.*

Realised : ₹

Estimate: ₹ 65,000 - 70,000

36. Victoria Queen, Silver (OMS), One Mohur, 1862, **Calcutta Mint**, obv. Queen features, filler & bust larger. This obverse is struck from 1870 Gold Mohur die & reverse from 1862 Gold Mohur die, but the coin is struck in silver metal. Slabbed & graded by N.G.S. of India as PR 63+ Restrike proof, OMS, Mule. *Extremely Rare.*

Realised : ₹

Estimate: ₹ 2,50,000 - 3,00,000



37. Victoria Queen, Silver Rupee, 1862, counter stamped, Crown and **PM** for **Port Mozambique**. *Very Rare.*

Realised : ₹

Estimate: ₹ 15,000 - 18,000



38

38. Victoria Queen, Silver (4), Two Annas, 1/4 Rupee, 1/2 Rupee and Rupee, 1862, Scarce as a set. *About Extremely Fine to Extremely Fine*. (4 coins)

Realised : ₹

Estimate: ₹ 7,000 - 8,000



39. Victoria Queen, Silver (4), Two Annas, 1/4 Rupee, 1/2 Rupee and Rupee, 1862. *Scarce as a set, Very Fine + to Extremely-Fine*. (4 coins)

Realised : ₹

Estimate: ₹ 6,000 - 8,000



40. Victoria Queen, Silver 1/2 Rupee, 1862, obv. B1, rev. II. *Scarce, Very Fine*.

Realised : ₹

Estimate: ₹ 2,500 - 3,000



41. Victoria Queen, Silver Rupee (2), 1862, **Calcutta Mint**, A/I/0/0 with Crescent and without Crescent. *Scarce, Very Fine to Extremely Fine*. (Pr 66). (2 coins)

Realised : ₹

Estimate: ₹ 2,500 - 3,500



42. Victoria Queen, Silver Rupee (2), 1862, **Madras Mint**, B/II/0/0 and 1862, **Bombay Mint**, B/II/0/0. *Scarce, About-Extremely Fine*. (Pr 57 and 58). (2 coins)

Realised : ₹

Estimate: ₹ 2,500 - 3,500



43. Victoria Queen, Silver Rupee, 1862, **Bombay Mint**, A/II/0/0. *Very Scarce, Very Fine*. (Pr 64)

Realised : ₹

Estimate: ₹ 3,000 - 4,000



44



45

44. Victoria Queen, Silver Rupee, 1862, **Calcutta Mint**, B/II/0/0. *Scarce, Very Fine +. (Pr 55)*

Realised : ₹

Estimate: ₹ 2,000 - 3,000

45. Victoria Queen, Silver Rupee, 1862, **Bombay Mint**, B/II/0/0, thick lettering type. *Rare, About Very Fine, Unlisted.*

Realised : ₹

Estimate: ₹ 2,000 - 3,000



46. Victoria Queen, Silver Rupee (2), 1862, **Calcutta Mint**, A/II (a)/0/0 and 1862, **Bombay Mint**, B/II (a)/0/0, both have 4 Pineapples. *Scarce, Very Fine. (Pr 62) second Unlisted. (2 coins)*

Realised : ₹

Estimate: ₹ 3,000 - 4,000



47. Victoria Queen, Silver Rupee (2), 1862, **Calcutta Mint**, A/II (a)/0/0, 4 Pineapples and 1862, **Bombay Mint**, B/II (a)/0/0, 4 Pineapples. *Scarce, as a set, About Very Fine to Very Fine. (Pr 62) second coin Unlisted. (2 coins)*

Realised : ₹

Estimate: ₹ 3,000 - 4,000



48. Victoria Queen, Silver Rupee, 1862, **Bombay Mint**, B/II/3/0. *Rare, Fine +. (Unlisted)*

Realised : ₹

Estimate: ₹ 2,000 - 3,000



49. Victoria Queen, Silver Rupee (2), 1862, **Bombay Mint**, A/II/0/5, first coin with broken 'D' in India and second coin with broken 'D' re-engraved. *Scarce, Extremely Fine to UNC. (Pr 85).* (2 coins)

Realised : ₹

Estimate: ₹ 3,000 - 4,000



50

51

50. Victoria Queen, Silver Rupee, 1862, B/I/0/4. *Very Fine, Rare. (Pr 80)*

Realised : ₹

Estimate: ₹ 6,000 - 8,000

51. Victoria Queen, Silver Rupee, 1862, **Bombay Mint**, A/II/0/5, all five dots in a line. *Scarce, A UNC. (Pr 85)*

Realised : ₹

Estimate: ₹ 2,000 - 3,000

52. Victoria Queen, Silver Rupee (4), 1862, **Bombay Mint**, B/II/1/0, B/II/2/0, B/II/0/3 and B/II/0/4. *Scarce, Very Fine to Extremely Fine. (Pr 69, 70, 77 and 81).* (4 coins)

Realised : ₹

Estimate: ₹ 5,000 - 6,000



53. Victoria Queen, Silver Rupee (5), 1862, **Bombay Mint**, A/II/0/4, A/II/0/5, A/II/0/6, A/II/0/7 and A/II/0/10. *Scarce, Very Fine + to Extremely Fine +. (Pr 79, 85, 86, 87 and 93).* (5 coins)

Realised : ₹

Estimate: ₹ 6,500 - 7,500



54. Victoria Queen, Silver Rupee (2), 1862, **Bombay Mint**, A/II/0/7, with Crescent and without Crescent. *Scarce, A UNC. (Pr 87).* (2 coins)

Realised : ₹

Estimate: ₹ 4,000 - 5,000



55. Victoria Queen, Silver Rupee (2), 1862, **Bombay Mint, A/II/0/10. Scarce, A UNC. (Pr 93).** (2 coins)

Realised : ₹

Estimate: ₹ 4,000 - 6,000



56. Victoria Queen, Silver Rupee (2), 1862, **Bombay Mint, A/II/1/1, with Crescent and without Crescent. Scarce, Extremely Fine to A UNC. (Pr 99).** (2 coins)

Realised : ₹

Estimate: ₹ 3,000 - 4,000



57. Victoria Queen, Silver Rupee, 1862, **Bombay Mint, B/I/0/4. Rare Variety, Very Fine +. (Pr 80)**

Realised : ₹

Estimate: ₹ 8,000 - 10,000

58. Victoria Queen, Silver Rupee, 1862, **Bombay Mint, A/II/0/11, 11th dot below the 3rd dot. Rare, About Very Fine. (Pr 94)**

Realised : ₹

Estimate: ₹ 7,000 - 9,000

59. Victoria Queen, Silver Rupee, 1862, **Bombay Mint, A/II/0/11, 11th dot below the 3rd dot. Rare, Very Fine. (Pr 94)**

Realised : ₹

Estimate: ₹ 5,000 - 7,000



60. Victoria Queen, Silver Rupee, 1862, **Bombay Mint, A/II/0/11, 11th dot below the 8th dot. Rare, Very Fine +. (Pr 94)**

Realised : ₹

Estimate: ₹ 8,000 - 10,000



61



62

61. Victoria Queen, Silver Rupee (2), 1862, **Bombay Mint**, A/II/1/2, with Crescent and without Crescent. *Scarce, Very Fine + to Extremely Fine. (Pr 103).* (2 coins)

Realised : ₹

Estimate: ₹ 3,000 - 4,000

62. Victoria Queen, Silver Rupee, 1862, B/II/2/3. *Very Fine.*

Realised : ₹

Estimate: ₹ 4,000 - 6,000



63. Victoria Queen, Silver Rupee (2), 1862, **Bombay Mint**, C/II/1/2. *Scarce, About Very Fine to Very Fine. (Pr 105).* (2 coins)

Realised : ₹

Estimate: ₹ 2,500 - 3,000



64. Victoria Queen, Silver Rupee **Lakhi**, obverse type, deeply struck on the other side. *Very Rare, Very Fine +.*

Realised : ₹

Estimate: ₹. 7,000 - 9,000



65. **Victoria Empress**, Gold Mohur, 1888. *Very Fine + to About Extremely Fine, Very Rare.*

Realised : ₹

Estimate: ₹ 70,000 - 80,000



66

66. Victoria Queen, Silver Two Annas (2), 1874, **Bombay Mint**, A/I, No mm, 1875, **Calcutta Mint**, A/I/ No mm. *Rare, About Very Fine to Very Fine. (Pr 516,489). (2 coins)*

Realised : ₹

Estimate: ₹ 2,500 - 3,500



67

67. **Victoria Empress**, Silver Two Annas (3), 1877, **Calcutta Mint**, A/I, No mm, 1878, **Calcutta Mint**, B/II, No mm and 1879, **Calcutta Mint**, B/II/C incuse. *Rare, Fine + to About Very Fine. (Pr 491, 493, and 494). (3 coins)*

Realised : ₹

Estimate: ₹ 2,500 - 3,500



68

68. Victoria Empress, Silver Two Annas (3), 1883, **Bombay Mint**, A/I/dot, 1884, **Bombay Mint**, A/I, No mm and 1885, **Bombay Mint**, A/I, B raise. *Rare, About Very Fine to Very Fine. (Pr 529, 531, and 537). (3 coins)*

Realised : ₹

Estimate: ₹ 3,000 - 4,000



69

69. Victoria Empress, Silver Two Annas (4), 1886, **Bombay Mint**, B/II, B incuse, 1887, **Bombay Mint**, B/II, B incuse, 1888, **Bombay Mint**, B/II, B incuse and 1889, **Bombay Mint**, B/II, B incuse. *Scarce, About Very Fine to Very Fine. (Pr 539, 540, 541 and 542). (4 coins)*

Realised : ₹

Estimate: ₹ 3,500 - 4,000



70. Victoria Empress, Silver Two Annas (5), 1890, **Calcutta Mint**, B/II, C incuse, 1891, **Calcutta Mint**, B/II, C incuse, 1892, **Bombay Mint**, B/II, B incuse, 1893, **Calcutta Mint**, B/II, C incuse and 1894, **Calcutta Mint**, B/II, C incuse. *Scarce, About Very Fine to Very Fine. (Pr 505, 506, 547, 508 and 509). (5 coins)*

Realised : ₹

Estimate: ₹ 4,000 - 5,000



71

71. Victoria Empress, Silver Two Annas (2), 1881, **Calcutta Mint**, B/II, C incuse and 1881, **Bombay Mint**, B/II/dot. *Rare, About Very Fine. (Pr 496, 524). (2 coins)*

Realised : ₹

Estimate: ₹ 3,000 - 4,000

72. Victoria Empress, Silver (6), Two Annas, 1895, **Calcutta Mint**, B/II, C incuse, 1896, **Bombay Mint**, B/II, B incuse, 1897, **Calcutta Mint**, B/II, C incuse, 1898, **Calcutta Mint**, B/II, C incuse, 1900, **Bombay Mint**, B/I, B raised and 1901, **Calcutta Mint**, B/II, C incuse. *Fine + to Very Fine. (Pr 510, 550, 512, 513, 553, 515). (6 coins)*

Realised : ₹

Estimate: ₹ 5,000 - 6,000



73



74



75

73. **Victoria Empress, Silver Two Annas (2), 1900, Bombay Mint, B/I, B raised and Calcutta Mint, B/II, C incuse, 2 different type. UNC, Rare. (2 coins)**

Realised : ₹

Estimate: ₹ 2,500 - 3,000

74. **Victoria Queen, Silver 1/4 Rupee, 1874, Bombay Mint, A/I/dot. Rare, Very Fine. (Pr 405)**

Realised : ₹

Estimate: ₹ 2,000 - 3,000

75. **Victoria Queen, Silver (2), 1/4 Rupee, 1875, Calcutta Mint, A/I, No mm and 1876, Calcutta Mint, A/I, No mm. Rare, Very Fine to Very Fine +. (Pr 380 and 381). (2 coins)**

Realised : ₹

Estimate: ₹ 3,000 - 4,000



76



77



78

76. **Victoria Empress, Silver (2), 1/4 Rupee, 1877, Calcutta Mint, B/I, No mm and 1879, Calcutta Mint, C/II, C incuse. Scarce, Fine + to About Very Fine. (Pr 382 and 384). (2 coins)**

Realised : ₹

Estimate: ₹ 2,500 - 3,500

77. **Victoria Empress, Silver 1/4 Rupee, 1881, Bombay Mint, A/II/dot. Rare, About Very Fine. (Pr 410)**

Realised : ₹

Estimate: ₹ 2,500 - 3,500

78. **Victoria Empress, Silver 1/4 Rupee, 1882, Calcutta Mint, C/II, C incuse. Rare, Fine +. (Pr 387)**

Realised : ₹

Estimate: ₹ 3,000 - 4,000



79



80

79. **Victoria Empress, Silver (2), 1/4 Rupee, 1883, Calcutta Mint, C/II, C incuse and 1884, Calcutta Mint, C/II, C incuse. Scarce, Fine + to About Very Fine. (Pr 388 and 389). (2 coins)**

Realised : ₹

Estimate: ₹ 2,500 - 3,500

80. **Victoria Empress, Silver (2), 1/4 Rupee, 1885, Calcutta Mint, C/II, C incuse and 1886, Bombay Mint, C/II, B raised. Scarce, Very Fine to Extremely Fine. (Pr 390 and 419). (2 coins)**

Realised : ₹

Estimate: ₹ 3,000 - 4,000



81



82

81. Victoria Empress, Silver (2), 1/4 Rupee, 1887, **Calcutta** Mint, C/II, C incuse and 1888, **Bombay** Mint, C/II, B raised. *About Very Fine to Very Fine. (Pr 392 and 421).* (2 coins)

Realised : ₹

Estimate: ₹ 2,000 - 3,000

82. Victoria Empress, Silver (2), 1/4 Rupee, 1889, **Bombay** Mint, C/II, B incuse and 1890, **Bombay** Mint, C/II, B incuse. *Scarce, About Very Fine to Very Fine. (Pr 423 and 424).* (2 coins)

Realised : ₹

Estimate: ₹ 2,500 - 3,500



83



84

83. Victoria Empress, Silver (2), 1/4 Rupee, 1891, **Calcutta** Mint, C/II, C incuse and 1892, **Bombay** Mint, C/II, B incuse. *Very Fine. (Pr 396 and 427).* (2 coins)

Realised : ₹

Estimate: ₹ 2,000 - 3,000

84. Victoria Empress, Silver (2), 1/4 Rupee, 1893, **Calcutta** Mint, C/II, C incuse and 1894, **Calcutta** Mint, C/II, C incuse. *About Extremely Fine. (Pr 398 and 399).* (2 coins)

Realised : ₹

Estimate: ₹ 2,500 - 3,000



85



86

85. Victoria Empress, Silver (2), 1/4 Rupee, 1896, **Calcutta** Mint, C/II, C incuse and 1897, **Calcutta** Mint, C/II, C incuse. *About Extremely Fine. (Pr 400 and 401).* (2 coins)

Realised : ₹

Estimate: ₹ 2,500 - 3,500

86. Victoria Empress, Silver (2), 1/4 Rupee, 1898, **Calcutta** Mint, C/II, C incuse and 1901, **Calcutta** Mint, C/II, C incuse. *Scarce, About Very Fine to Very Fine +. (Pr 402 and 404).* (2 coins)

Realised : ₹

Estimate: ₹ 2,500 - 3,500



87. **Victoria Queen**, Silver 1/2 Rupee, 1874, **Bombay** Mint, B2/II/dot. *Rare, Extremely Fine. (Pr 285)*

Realised : ₹

Estimate: ₹ 6,000 - 8,000



88



89



90



88. **Victoria Queen**, Silver 1/2 Rupee, 1875, **Bombay Mint**, B2/II/dot. *Rare, Very Fine. (Pr 286)*

Realised : ₹

Estimate: ₹ 4,500 - 5,500

89. **Victoria Queen**, Silver 1/2 Rupee, 1875, **Calcutta Mint**, A/I, No mm. *Rare, Very Fine. (Pr 260)*

Realised : ₹

Estimate: ₹ 4,500 - 5,500

90. **Victoria Empress**, Silver 1/2 Rupee, 1877, **Bombay Mint**, A/II/dot. *Very Rare, Very Fine +. (Unlisted)*

Realised : ₹

Estimate: ₹ 10,000 - 15,000



91



92



93



91. **Victoria Empress**, Silver 1/2 Rupee, 1878, **Calcutta Mint**, A/I, No mm. *Rare, About Very Fine. (Pr 262)*

Realised : ₹

Estimate: ₹ 4,500 - 5,500

92. **Victoria Empress**, Silver 1/2 Rupee, 1880, **Calcutta Mint**, A/I, C incuse, mount removed. *Fine, Extremely Rare.*

Realised : ₹

Estimate: ₹ 20,000 - 25,000

93. **Victoria Empress**, Silver 1/2 Rupee, 1881, **Bombay Mint**, B2/II/dot. *Very Rare, Very Fine +. (Pr 289)*

Realised : ₹

Estimate: ₹ 10,000 - 15,000



94



95



96



94. **Victoria Empress**, Silver 1/2 Rupee, 1881, **Calcutta Mint**, A/I, C incuse. *Very Rare, About Extremely Fine. (Pr 265)*

Realised : ₹

Estimate: ₹ 12,000 - 16,000

95. **Victoria Empress**, Silver 1/2 Rupee, 1883, **Calcutta Mint**, A/I, C incuse. *Very Rare, Fine +. (Pr 267)*

Realised : ₹

Estimate: ₹ 7,000 - 9,000

96. **Victoria Empress**, Silver 1/2 Rupee, 1884, **Calcutta Mint**, A/I, C incuse. *Very Rare, Very Fine. (Pr 268)*

Realised : ₹

Estimate: ₹ 7,000 - 9,000



97



98



99



97. Victoria Empress, Silver 1/2 Rupee, 1885, **Bombay Mint**, A/II, B raised. *Very Rare, About Very Fine. (Pr 294)*

Realised : ₹

Estimate: ₹ 6,000 - 8,000

98. Victoria Empress, Silver 1/2 Rupee, 1886, **Bombay Mint**, A/II, B raised. *Scarce, Very Fine. (Pr 295)*

Realised : ₹

Estimate: ₹ 4,000 - 6,000

99. Victoria Empress, Silver 1/2 Rupee, 1886, **Calcutta Mint**, A/I, C incuse. *About Very Fine. (Pr 270)*

Realised : ₹

Estimate: ₹ 3,500 - 4,500



100



101



102



100. Victoria Empress, Silver 1/2 Rupee, 1888, **Bombay Mint**, A/II, B raised. *Scarce, About Very Fine. (Pr 298)*

Realised : ₹

Estimate: ₹ 4,000 - 5,000

101. Victoria Empress, Silver 1/2 Rupee, 1888, **Bombay Mint**, A/II, No mm. *Scarce, About Very Fine. (Pr 297)*

Realised : ₹

Estimate: ₹ 4,000 - 5,000

102. Victoria Empress, Silver 1/2 Rupee, 1888, **Calcutta Mint**, A/I, C incuse. *Scarce, Fine +. (Pr 272)*

Realised : ₹

Estimate: ₹ 3,000 - 4,000



103



104



105



103. Victoria Empress, Silver 1/2 Rupee, 1888, **Bombay Mint**, A/II, No mm. *Scarce, About Very Fine. (Pr 297)*

Realised : ₹

Estimate: ₹ 3,000 - 4,000

104. Victoria Empress, Silver 1/2 Rupee, 1889, **Calcutta Mint**, A/I, C incuse. *Very Fine. (Pr 273)*

Realised : ₹

Estimate: ₹ 3,000 - 4,000

105. Victoria Empress, Silver 1/2 Rupee, 1889, **Bombay Mint**, A/II, B raised. *Rare, About Extremely Fine. (Pr 299)*

Realised : ₹

Estimate: ₹ 5,000 - 7,000



106



107



108



106. Victoria Empress, Silver 1/2 Rupee, 1892, **Bombay Mint**, A/I, B incuse. *Extremely Fine* +. (Pr 302)

Realised : ₹

Estimate: ₹ 4,000 - 5,000

107. Victoria Empress, Silver 1/2 Rupee, 1892, **Calcutta Mint**, A/I, C incuse. *Very Fine*. (Pr 276)

Realised : ₹

Estimate: ₹ 3,000 - 4,000

108. Victoria Empress, Silver 1/2 Rupee, 1893, **Calcutta Mint**, A/I, C incuse. *Rare, Very Fine*. (Pr 277)

Realised : ₹

Estimate: ₹ 5,000 - 7,000



109



110



111



109. Victoria Empress, Silver 1/2 Rupee, 1896, **Calcutta Mint**, A/I, C incuse. *Very Fine* +. (Pr 279)

Realised : ₹

Estimate: ₹ 3,000 - 4,000

110. Victoria Empress, Silver 1/2 Rupee, 1897, **Bombay Mint**, A/I, B incuse. *Very Fine*. (Pr 305)

Realised : ₹

Estimate: ₹ 3,500 - 4,500

111. Victoria Empress, Silver 1/2 Rupee, 1897, **Calcutta Mint**, A/I, C incuse. *Scarce, Extremely Fine*. (Pr 280)

Realised : ₹

Estimate: ₹ 5,000 - 7,000



112



113



114



112. Victoria Empress, Silver 1/2 Rupee, 1898, **Calcutta Mint**, A/I, C incuse. *Very Fine* +. (Pr 281)

Realised : ₹

Estimate: ₹ 3,000 - 4,000

113. Victoria Empress, Silver 1/2 Rupee, 1899, **Bombay Mint**, A/I, B incuse inverted. *A UNC*. (Pr 307)

Realised : ₹

Estimate: ₹ 3,000 - 4,000

114. **Victoria Queen**, Silver Rupee, 1875, **Bombay Mint**, A2/I/dot with double Crescent. *Scarce, Extremely Fine* +. (Pr 113)

Realised : ₹

Estimate: ₹ 2,500 - 3,000



115



116

115. Victoria Queen, Silver Rupee, 1875, **Bombay Mint**, C1/II/dot. *Very Fine +, Rare.*

Realised : ₹

Estimate: ₹ 3,000 - 4,000

116. Victoria Queen, Silver Rupee (2), 1876, **Calcutta Mint**, A1/I, No mm and 1876, **Bombay Mint**, A2/II/dot. *Scarce, A UNC to UNC. (Pr 114, and 147). (2 coins)*

Realised : ₹

Estimate: ₹ 3,000 - 4,000



117



118

117. Victoria Queen, Silver Rupee, 1876, **Bombay Mint**, A5/II/dot. *Rare, A UNC, Unlisted.*

Realised : ₹

Estimate: ₹ 3,000 - 4,000

118. **Victoria Empress**, Silver Rupee (2), 1877, **Bombay Mint**, A2/II/dot and 1877, **Bombay Mint**, A3/II (i)/dot, variant of rev II flower. *Scarce, A UNC to UNC. (Pr 149). Second Coin Unlisted. (2 coins)*

Realised : ₹

Estimate: ₹ 3,000 - 4,000



119

119. Victoria Empress, Silver Rupee (2), 1877, **Bombay Mint**, A3/II/dot and 1877, **Bombay Mint**, A6/I/dot. *Very Rare, A UNC to UNC. (Both Unlisted) (2 coins)*

Realised : ₹

Estimate: ₹ 6,000 - 8,000

120. Victoria Empress, Silver Rupee (2), 1878, **Bombay Mint**, A3/II/dot and 1878, **Bombay Mint**, A3/II (ii)/dot, variant of rev II flower. *Scarce, A UNC to UNC. (Pr 151). second coin Unlisted. (2 coins)*

Realised : ₹

Estimate: ₹ 3,000 - 4,000

121. Victoria Empress, Silver Rupee, 1879, **Calcutta Mint**, A1/I, C incuse. *Scarce, Extremely Fine. (Pr 117)*

Realised : ₹

Estimate: ₹ 2,000 - 3,000



122



123

122. Victoria Empress, Silver Rupee, 1881, **Bombay Mint**, A3/IV/dot. *Scarce, Very Fine +, Unlisted.*

Realised : ₹

Estimate: ₹ 6,000 - 8,000

123. Victoria Empress, Silver Rupee, 1881, **Bombay Mint**, A3/I/dot. *Rare, Very Fine +. (Pr 158)*

Realised : ₹

Estimate: ₹ 6,000 - 8,000



124



125

124. Victoria Empress, Silver Rupee (2), 1883, **Bombay Mint**, A3/I/dot and 1883, **Bombay Mint**, A3/I, B raised. *Scarce, Very Fine + to A UNC. (Pr 162 and 164). (2 coins)*

Realised : ₹

Estimate: ₹ 3,500 - 4,500

125. Victoria Empress, Silver Rupee, 1884, **Bombay Mint**, A3/II, B raised bottom. *Scarce, Extremely Fine.*

Realised : ₹

Estimate: ₹ 2,000 - 3,000



126



127

126. Victoria Empress, Silver Rupee (2), 1885, **Calcutta Mint**, A1/I, C incuse and 1885, **Bombay Mint**, A3/II, B raised. *Scarce, A UNC. (Pr 124 and 168). (2 coins)*

Realised : ₹

Estimate: ₹ 2,500 - 3,500

127. Victoria Empress, Silver Rupee, 1886, **Calcutta Mint**, C2/I, C incuse Mule. *Scarce, Fine +. (Unlisted)*

Realised : ₹

Estimate: ₹ 2,500 - 3,500

128. Victoria Empress, Silver Rupee (2), 1887, **Bombay Mint**, C2/I, B incuse (Inverted) and 1888, **Bombay Mint**, C2/I, B raised. *A UNC to UNC. (Pr 173 and 174). (2 coins)*

Realised : ₹

Estimate: ₹ 2,500 - 3,500



129



130



129. Victoria Empress, Silver Rupee, 1887, **Bombay Mint**, A3/I, B incuse Inverted. *Rare, About Very Fine. (Pr 172 A)*

Realised : ₹

Estimate: ₹ 2,500 - 3,500

130. Victoria Empress, Silver Rupee, 1888, **Bombay Mint**, C2/I, B incuse (Inverted). *Rare, Very Fine, Unlisted.*

Realised : ₹

Estimate: ₹ 2,500 - 3,500



131. Victoria Empress, Silver Rupee (3), 1889, **Bombay Mint**, C2/I, B incuse, 1890, **Bombay Mint**, C2/I, B incuse and 1891, **Bombay Mint**, C2/I, B incuse. *A UNC to UNC. (Pr 177, 178 and 179). (3 coins)*

Realised : ₹

Estimate: ₹ 4,000 - 5,000



132



133

132. Victoria Empress, Silver Rupee, 1892, **Bombay Mint**, C2/I, B raised small. *Scarce, UNC. (Pr 180)*

Realised : ₹

Estimate: ₹ 3,000 - 4,000

133. Victoria Empress, Silver Rupee (2), 1892, **Bombay Mint**, C2/I, B incuse and 1893, **Bombay Mint**, C2/I, B incuse. *A UNC to UNC. (Pr 181 and 182). (2 coins)*

Realised : ₹

Estimate: ₹ 2,500 - 3,500



134. Victoria Empress, Silver Rupee, 1897, **Bombay Mint**, C2/I, B incuse. *Rare, Very Fine +. (Pr 183)*

Realised : ₹

Estimate: ₹ 20,000 - 25,000



135



136

135. Victoria Empress, Silver Rupee, 1897, C2/I, B incuse, **Bombay Mint**. *Very Fine, Rare.*

Realised : ₹

Estimate: ₹ 12,000 - 15,000

136. Victoria Empress, Silver Rupee, 1898, **Bombay Mint**, C2/I, B incuse. *Scarce, Extremely Fine. (Pr 184)*

Realised : ₹

Estimate: ₹ 3,000 - 4,000



137. Victoria Empress, Silver Rupee (3), 1900, **Calcutta Mint**, C3/I, C incuse, 1901, **Calcutta Mint**, C3/I, C incuse and 1901, **Bombay Mint**, A3/I, B incuse. *Scarce, Extremely Fine to UNC. (Pr 138, 139 and 187). (3 coins)*

Realised : ₹

Estimate: ₹ 3,500 - 4,500



138



139

138. Victoria Empress, Copper One Quarter Anna, 1880, **Calcutta Mint**, rev. type II. *Extremely Fine, Scarce.*

Realised : ₹

Estimate: ₹ 2,000 - 2,500

139. Victoria Empress, Copper Half Anna, 1877, Bust C, **Calcutta Mint**. *Very Fine +, Scarce.*

Realised : ₹

Estimate: ₹ 5,000 - 6,000



140. Victoria Empress, Copper Half Anna, 1877, Bust C, **Calcutta Mint**. *Fine +.*

Realised : ₹

Estimate: ₹ 2,000 - 2,500



141



142



141. Victoria Empress, Copper Half Anna Proof, 1878, **Calcutta** Mint, restrike proof. *Very Rare.* (Pr 587)

Realised : ₹

Estimate: ₹ 18,000 - 22,000

142. Victoria Empress, Copper Half Anna Proof, 1890, **Calcutta** Mint, restrike proof. *Very Rare.* (Pr 590)

Realised : ₹

Estimate: ₹ 18,000 - 22,000



143. Victoria Empress, Copper Half Anna Proof, 1891, **Calcutta** Mint, restrike proof. *Very Rare.* (Pr 591)

Realised : ₹

Estimate: ₹ 18,000 - 22,000



144



145



146



144. **Edward VII**, Silver Two Annas, 1909, **Calcutta** Mint. *Rare Very Fine +.* (Pr 562)

Realised : ₹

Estimate: ₹ 4,000 - 6,000

145. **Edward VII**, Silver 1/2 Rupee, 1906, **Calcutta** Mint. *Scarce, Extremely Fine.* (Pr 310)

Realised : ₹

Estimate: ₹ 2,000 - 2,500

146. **Edward VII**, Silver 1/2 Rupee, 1909, **Calcutta** Mint. *Rare Very Fine.* (Pr 313)

Realised : ₹

Estimate: ₹ 2,000 - 2,500



147. **Edward VII**, Silver (4), Two Annas, 1/4 Rupee, 1/2 Rupee and Rupee, 1906 BM, 1910 CM and 1905 CM. *Scarce as a set, Very Fine to A UNC.* (Pr 202, 314, 433 and 558). (4 coins)

Realised : ₹

Estimate: ₹ 4,000 - 5,000



148



151

148. Edward VII, Silver Rupee, 1903, **Calcutta** Mint, urou error, 4 Diamonds. *Rare, Very Fine, Unlisted.*

Realised : ₹

Estimate: ₹ 5,000 - 7,000

149. Edward VII, Silver Rupee (5), 1904, 1906, 1907, 1909 and 1910. All **Calcutta** Mint. *Scarce, Extremely Fine + to A UNC. (Pr 190, 192, 193, 195 and 196).* (5 coins)

Realised : ₹

Estimate: ₹ 5,000 - 6,000

150. Edward VII, Silver Rupee (8), 1903 to 1910, All **Bombay** Mint. *Scarce, as a complete set, Very Fine + to Extremely Fine. (Pr 199 to 206).* (8 coins)

Realised : ₹

Estimate: ₹ 8,000 - 10,000

151. Edward VII, Copper 1/2 Pice, 1908, **Calcutta** Mint. *UNC, Rare.*

Realised : ₹

Estimate: ₹ 9,000 - 10,000



(x1.5)



152. **George V**, Gold 15 Rupees, 1918, **Bombay** Mint. *Rare, About Extremely Fine. (Pr 25)*

Realised : ₹

Estimate: ₹ 80,000 - 1,10,000



153



154

153. **George V**, Silver Two Annas, 1911, Pig type, **Calcutta** Mint. *Very Rare, Extremely Fine. (Pr 564)*

Realised : ₹

Estimate: ₹ 6,000 - 8,000

154. **George V**, Silver Two Annas, 1911, Pig type, **Calcutta** Mint. *Very Rare, Fine +. (Pr 564)*

Realised : ₹

Estimate: ₹ 3,000 - 4,000



155. **George V**, Silver Two Annas (8), 1912 BM, 1912 CM, 1913 BM, 1914 BM, 1915 BM, 1915 CM, 1916 CM and 1917 CM. *Scarce as a set, About Very Fine to Extremely Fine. (Pr 571, 565, 572, 573, 574, 568, 569 and 570).* (8 coins)

Realised : ₹

Estimate: ₹ 3,200 - 3,700



156



157

156. George V, Silver 1/4 Rupee, 1911, Pig type, Calcutta Mint. *Very Rare, About Very Fine +.* (Pr 440)

Realised : ₹

Estimate: ₹ 8,000 - 10,000

157. George V, Silver 1/4 Rupee, 1911, Pig type, Calcutta Mint. *Very Rare, Very Fine.* (Pr 440)

Realised : ₹

Estimate: ₹ 6,000 - 8,000



158

158. George V, Silver 1/4 Rupee (6), 1916 CM, 1925 BM, 1928 BM, 1934 CM, 1936 CM and 1936 BM. *Scarce, Very Fine.* (Pr 445, 458, 459, 452, 453 and 460). (6 coins)

Realised : ₹

Estimate: ₹ 2,500 - 3,500

159. George V, Silver 1/2 Rupee (8), 1912, 1914, 1917, 1919, 1924, 1926, 1928 and 1936, All Bombay Mint. *Extremely Fine to UNC.* (Pr 336, 338, 341, 343, 346, 348, 349 and 350). (8 coins)

Realised : ₹

Estimate: ₹ 5,500 - 6,500



160



161

160. George V, Silver 1/2 Rupee (5), 1912, 1930, 1933, 1934 and 1936, All Calcutta Mint. *Scarce as a set, Extremely Fine.* (Pr 324, 332, 333, 334 and 335). (5 coins)

Realised : ₹

Estimate: ₹ 3,500 - 4,500

161. George V, Silver (2), 1/2 Rupee and 1/4 Rupee, 1930, Calcutta Mint. *Scarce, About Very Fine.* (Pr 332 and 451). (2 coins)

Realised : ₹

Estimate: ₹ 2,000 - 3,000

162. George V, Silver (4), Two Annas, 1/4 Rupee, 1/2 Rupee and Rupee, 1915. *Rare as a set, Fine + to Extremely Fine +.* (4 coins)

Realised : ₹

Estimate: ₹ 3,500 - 4,500

163. George V, Silver Rupee (2), 1915, Bombay Mint and 1915, Calcutta Mint. *Scarce, Very Fine + to A UNC.* (Pr 221 and 211). (2 coins)

Realised : ₹

Estimate: ₹ 2,500 - 3,500



164



165

164. George V, Silver Rupee, 1921, **Bombay Mint**. *Rare, A UNC. (Pr 227)*

Realised : ₹

Estimate: ₹ 3,500 - 4,500

165. George V, Silver Rupee, 1922, **Bombay Mint**. *Rare, A UNC. (Pr 228)*

Realised : ₹

Estimate: ₹ 3,000 - 4,000



166. George V, Silver Rupee (3), 1911, **Calcutta Mint**, 1921, **Bombay Mint**, and 1922, **Bombay Mint**. *Rare as a set of 3 coins first coin 1911, Very Fine, 1921 and 1922. A UNC. (Pr 207, 227, and 228). (3 coins)*

Realised : ₹

Estimate: ₹ 8,000 - 10,000



167



168

167. George VI, Silver 1/2 Rupee (2), 1938, **Bombay Mint**. *Scarce, Extremely Fine. (Pr 351). (2 coins)*

Realised : ₹

Estimate: ₹ 2,500 - 3,500

168. George VI, Silver 1/2 Rupee, 1939, **Calcutta Mint**, head type II. *Rare, Extremely Fine. (Pr 364)*

Realised : ₹

Estimate: ₹ 2,000 - 2,500



169. George VI, Silver Rupee, 1938, **Bombay Mint**, without dot. *Scarce, A UNC. (Pr 233)*

Realised : ₹

Estimate: ₹ 5,000 - 7,000



170



171

170. George VI, Silver Rupee, 1938, **Bombay Mint**, with dot. *Scarce, UNC. (Pr 234)*

Realised : ₹

Estimate: ₹ 5,000 - 7,000

171. George VI, Half Silver Rupee, 1945, **Bombay Mint**, large 5. *Rare, About Extremely Fine.*

Realised : ₹

Estimate: ₹ 20,000 - 25,000



172



173

172. George V, Cupro Nickel, 8 Annas, 1919, **Bombay Mint**. *Very Scarce, A UNC. (Pr 872)*

Realised : ₹

Estimate: ₹ 4,000 - 5,000

173. George V, Cupro Nickel, 8 Annas, 1919, **Calcutta Mint**. *Scarce, Very Fine. (Pr 870)*

Realised : ₹

Estimate: ₹ 2,500 - 3,500

Republic India



174



175

174. **Proof Coin**, Copper Nickel, 2 Anna, 1950, **Bombay Mint**. *Rare.*

Realised : ₹

Estimate: ₹ 4,000 - 5,000

175. **Anna Series**, Copper Nickel, 2 Anna, 1955, **Bombay Mint**. *Very Rare Date, About Very Fine.*

Realised : ₹

Estimate: ₹ 10,000 - 15,000



176. **Food for All**, Silver (2), 10 Rupees, 1970, **Bombay** and **Calcutta** Mint. *About Extremely Fine, Scarce.* (2 coins)

Realised : ₹

Estimate: ₹ 5,500 - 6,000



177. **Proof Coins, Food for All**, 1971, 20 Paisa Bronze and 10 Rupees Silver (2), **Bombay** Mint. *Uncirculated, Scarce.* (2 coins). (B mint mark in proof issue)

Realised : ₹

Estimate: ₹ 8,000 - 10,000



178. **Food for All**, 1971, 20 Paisa Bronze and 10 Rupees Silver (2), **Bombay** Mint. *Uncirculated, Scarce.* (2 coins)

Realised : ₹

Estimate: ₹ 8,000 - 10,000



179. **Proof Coin**, 10 Rupees, 1972, Silver Jubilee of Independence, **Bombay** Mint. (B Mint Mark for Proof Issue)

Realised : ₹

Estimate: ₹ 2,000 - 2,500



180



181



182



183



184



185



187



188



186



189



190



191



192



193



194

Proof Sets

180. **1972**, Proof Set of 9 coins, **25th Anniversary of Independence, Bombay** Mint. In original packing of mint. *Rare*.
(9 coins)
Realised : ₹ Estimate: ₹ 13,000 - 15,000
181. **1974**, Proof Set of 10 coins, **Food for all, Bombay** Mint. In original packing of mint, without detail card. (10 coins)
Realised : ₹ Estimate: ₹ 10,000 - 12,000
182. **1975**, Proof Set of 10 coins, **Equality Development Peace, Bombay** Mint, in original packing. *Scarce*.
Realised : ₹ Estimate: ₹ 11,000 - 13,000
183. **1976**, Proof Set of 10 coins, **Food and Work for all, Bombay** Mint, in original packing. *Scarce*.
Realised : ₹ Estimate: ₹ 10,000 - 12,000
184. **1977**, Proof Set of 10 coins, **Save for Development, Bombay** Mint, in original packing. *Scarce*.
Realised : ₹ Estimate: ₹ 12,000 - 14,000
185. **1979**, Proof Set of 2 coins, 10 and 50 Rs. **Happy Child Nation's Pride, Bombay** Mint, in original packing. *Scarce*.
Realised : ₹ Estimate: ₹ 7,000 - 9,000
186. **1979**, Proof Set of 10 coins, **Happy Child Nation's Pride, Bombay** Mint, in original packing. *Scarce*.
Realised : ₹ Estimate: ₹ 10,000 - 12,000
187. **1981**, Proof Set of 4 coins, 10p, 25p, 10 Rs. and 100 Rs. **World Food Day**, in original packing. *Scarce*.
Realised : ₹ Estimate: ₹ 15,000 - 18,000
188. **1982**, Proof Set of 2 coins, 10 and 100, **IX Asian Games Delhi, Bombay** Mint. *Scarce*.
Realised : ₹ Estimate: ₹ 8,000 - 10,000
189. **1982**, Proof Set of 4 coins, 10p, 25p, 10 Rs. and 100 Rs. **IX Asian Games Delhi, Bombay** Mint. *Scarce*.
Realised : ₹ Estimate: ₹ 12,000 - 14,000
190. **1982**, Proof Set of 2 coins, 10 and 100 Rs. **National Integration, Bombay** Mint. *Scarce*.
Realised : ₹ Estimate: ₹ 8,000 - 10,000
191. **1982**, Proof Set of 4 coins, 50p, 2, 10 and 100 Rs. **National Integration. Bombay** Mint. *Scarce*.
Realised : ₹ Estimate: ₹ 12,000 - 14,000
192. **1985**, Proof Set of 4 coins, 50p, 5, 20 and 100 Rs. **Indira Gandhi, Bombay** Mint. *Scarce*.
Realised : ₹ Estimate: ₹ 15,000 - 20,000
193. **1986**, Proof Set of 3 coins, 50p, 20 and 100 Rs. **Fisheries, Bombay** Mint. *Scarce*.
Realised : ₹ Estimate: ₹ 14,000 - 18,000
194. **1989**, Proof Set of 4 coins, 1, 5, 20 and 100 Rs. **Jawaharlal Nehru with stand, Bombay** Mint. *Scarce*.
Realised : ₹ Estimate: ₹ 15,000 - 20,000

UNC Sets

195. **1970**, Strip Pack, **Bombay** Mint, 8 coins, *UNC, Scarce*.
Realised : ₹ Estimate: ₹ 6,000 - 7,000



196



197



198



199



200



201



202



203



204



205



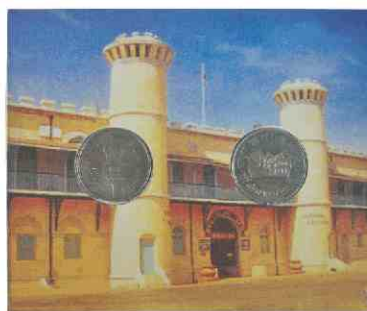
206



207



209



210



208



211



212

196. **1970**, UNC Set of 2 coins, 20 Paisa and 10 Rs. **Food for All**. In original packing of mint. *Scarce*.
Realised : ₹ Estimate: ₹ 6,000 - 7,000
197. **1971**, UNC Set of 2 coins, 20 Paisa and 10 Rs. **Food for All**. Without detail card. In original packing of mint. *Rare*.
Realised : ₹ Estimate: ₹ 10,000 - 12,000
198. **1980**, UNC Set of 2 coins, 10 and 100 Rs. **Rural women's development, Bombay** Mint. *Scarce*.
Realised : ₹ Estimate: ₹ 6,000 - 8,000
199. **1982**, UNC Set of 2 coins, 10 and 100 Rs. **National Integration, Bombay** Mint. *Scarce*.
Realised : ₹ Estimate: ₹ 6,000 - 8,000
200. **1985**, UNC Set of 2 coins, 20 and 100 Rs. **Indira Gandhi, Bombay** Mint. *Scarce*.
Realised : ₹ Estimate: ₹ 8,000 - 10,000
201. **1985**, UNC Set of 2 coins, 10 and 100 Rs. **International Youth Year, Calcutta** Mint. *Scarce*.
Realised : ₹ Estimate: ₹ 12,000 - 15,000
202. **1985**, UNC Set of 2 coins, 10 and 100 Rs. **RBI Golden Jubilee, Bombay** Mint. *Scarce*.
Realised : ₹ Estimate: ₹ 7,000 - 9,000
203. **1986**, UNC Set of 2 coins, 20 and 100 Rs. **Fisheries, Bombay** Mint. *Scarce*.
Realised : ₹ Estimate: ₹ 10,000 - 12,000
204. **1989**, UNC Set of 4 coins, 1, 5, 20 and 100 Rs. **Jawaharlal Nehru**. (without stand) **Bombay** Mint. *Scarce*.
Realised : ₹ Estimate: ₹ 10,000 - 12,000
205. **1996**, UNC Set of 2 coins, 50 and 100 Rs. **Sardar Vallabhbhai Patel, Mumbai** Mint. In original packing of mint. *Scarce*.
Realised : ₹ Estimate: ₹ 5,000 - 6,000
206. **1996**, UNC Set of 3 coins, 10, 50 and 100 Rs. **Sardar Vallabhbhai Patel, Mumbai** Mint. *Scarce*.
Realised : ₹ Estimate: ₹ 7,000 - 9,000
207. **1996, Netaji Subhash Chandra Bose**, Centenary 1996, UNC collector's pack 2 coins set (2 Rs. each), (In plastic pouch packing). **Calcutta** Mint, *UNC, Very Rare*. (These coins were issued one year earlier before centenary year, so recalled by the mint.)
Realised : ₹ Estimate: ₹ 40,000 - 45,000
208. **1996**, UNC Set of 2 coins, 5 Rs. each, **2nd International Crop Science Congress, Calcutta** Mint, VIP Set. *Scarce*.
Realised : ₹ Estimate: ₹ 6,000 - 7,000
209. **1997**, Special Mint set of **Netaji Subhash Chandra Bose**, Centenary 1997, issued only to the members of the **Calcutta** Mint, co-operative credit society as a part of the platinum jubilee celebration of the **Calcutta** Mint, co-op credit society Ltd. Rs. 10 and 50 coins with the mint token issue in 2005 as struck very rare.
Realised : ₹ Estimate: ₹ 30,000 - 40,000
210. **1997**, Special Commemorative coins set of **Cellular jail Port Blair** 1997, 2 coins of 1 Rupee. Andaman & Nicobar Administration Felicitation to Freedom Fighters.
Realised : ₹ Estimate: ₹ 8,000 - 10,000
211. **1998**, UNC Set of 3 coins, 10, 50 and 100 Rs. **Deshbandhu Chitranjan Das, Bombay** Mint. *Scarce*.
Realised : ₹ Estimate: ₹ 8,000 - 10,000
212. **1999**, UNC Set of 3 coins, 2, 50 and 100 Rs. **Chhatrapati Shivaji, Bombay** Mint, In original packing of mint.
Realised : ₹ Estimate: ₹ 7,000 - 8,000

Foreign Coins



213



213. **Austrian State**, Burgau, Silver Thaller, 1780. *Very Fine +, Scarce.*

Realised : ₹

214



214. **Burma**, Silver Kyat (1 Rupee), Y#7. *Very Fine, Scarce.*

Realised : ₹

Estimate: ₹ 1,500 - 2,000



215



215. **Eritrea Italian Colony**, Silver Tallero. (KM 5). *Very Fine, Scarce.*

Realised : ₹

Estimate: ₹ 2,500 - 3,000



216



216. **Great Britain**, Gold Sovereign, 1829, Georgius IV. (KM 696). *Very Fine.*

Realised : ₹

Estimate: ₹ 28,000 - 30,000



217. **Great Britain**, Gold 2 Pound, 1887, 15.97g. (KM 768). *Extremely Fine, Scarce.*

Realised : ₹

Estimate: ₹



218



218. **Indo Sassanian**, Gold Dinar, 7g, Iranian Bust of the king to right on obv. The fire altar in the centre with traces of Brahmi legend on rev. *About Very Fine, Scarce.*

Realised : ₹

Estimate: ₹ 25,000 - 30,000

219. **Japan**, Silver Yen, year 28, Y#A25.3. *Very Fine, Scarce.*

Realised : ₹

Estimate: ₹ 2,500 - 3,000



220



220. **Mexico**, Silver 8 Reales, Carlous IIII. (KM 109). *Very Fine*.

Realised : ₹

Estimate: ₹ 2,000 - 2,200



221



221. **Mexico**, Silver 8 Reales, Ferdin VII. (KM 110). *Very Fine +, Scarce*.

Realised : ₹

Estimate: ₹ 2,200 - 2,500



222



222. **Newfoundland**, Silver 50 cents, 11.7g, 1909, Edward VII. (KM 11). *Very Fine*.

Realised : ₹

Estimate: ₹ 2,000 - 2,500



223



223. **Netherland**, Silver 2 ½ Gulden, 1866. (KM 82). *Very Fine, Scarce*.

Realised : ₹

Estimate: ₹ 3,500 - 4,000



224



225



224. **Portugal**, Gold 400 Reis, 1.07g, 1736. (KM 201). *Very Fine +, Rare*.

Realised : ₹

Estimate: ₹ 10,000 - 12,000

225. **Portugal**, Silver (3), Carlos I, 200, 500 and 1000 Reis, 1898. (KM 537, 538, 539). *Extremely Fine, Scarce*. (3 coins)

Realised : ₹

Estimate: ₹ 4,500 - 5,000

226. **Portugal**, Silver, Carlos I, 1000 Reis, 1899. (KM 540). *Very Fine +, Scarce*.

Realised : ₹

Estimate: ₹ 2,500 - 3,000

227. **Straits Settlements**, Silver Dollar, 27g, 1904, Edward VI. (KM 25). *About Extremely Fine*.

Realised : ₹

Estimate: ₹ 5,000 - 6,000



228. Straits Settlements, Silver Dollar, 20g, 1907, Edward VII. (KM 26). *Very Fine +*.

Realised : ₹

Estimate: ₹ 4,000 - 5,000



229



229. **Switzerland**, Silver, 5 Francs, 1922. (KM 37). *Very Fine +, Rare*.

Realised : ₹

Estimate: ₹ 4,000 - 5,000



230



230. **Switzerland**, Silver, 5 Francs, 1925. (KM 38). *Very Fine +, Rare*.

Realised : ₹

Estimate: ₹ 4,000 - 5,000



231. **U.S.A.**, Gold 5 Dollar, 8.4g, 1909, Indian Head type. *Very Fine*.

Realised : ₹

Estimate: ₹ 20,000 - 22,000



232. **U.S.A.**, Silver (7), 1, 2, 5, 10, 20, 50 and 100 Dollar, 999 fine Silver Bar, total weight of 7 notes is 870g, Federal reserve note series 1998 Sign: Secretary of the Treasury. Packed in original mint wooden box by the Washington Mint. *Rare as a set. (7 different)*

Realised : ₹

Estimate: ₹ 70,000 - 80,000

Paper Money



242

233. **British India, George V**, Portrait Note, Rupee 1, 1917, Sign: **A C McWatters**, Prefix 'Y'. (Prefix Y was put in circulation in British East Africa), (Jhun 1.2A). *UNC, Very Rare.*

Realised : ₹

Estimate: ₹ 32,000 - 35,000

234. **George V**, Portrait, Rupee 5, Sign: **J.B. Taylor**, (Jhun 4.2). *Very Fine+, Rare.*

Realised : ₹

Estimate: ₹ 22,000 - 24,000

235. **George V**, Portrait, Rupee 10, Sign: **H. Denning**, Serial Number in top right and left corner, (Jhun 6B.1). *Very Fine, Scarce.*

Realised : ₹

Estimate: ₹ 20,000 - 22,000

236. **George V**, Portrait, Rupee 10, Sign: **J.B. Taylor**, Printed in England, Released in 1926, (Jhun 7.2). *Very Fine, Scarce.*

Realised : ₹

Estimate: ₹ 18,000 - 20,000

237. **George V**, Portrait, Rupee 10, Sign: **H. Denning**, Printed in England, Released in 1925, (Jhun 7.1). *Very Fine, Scarce.*

Realised : ₹

Estimate: ₹ 17,000 - 20,000

238. **George VI**, Portrait Rupee 2, Sign: **J.B. Taylor** issued in 1943, (Jhun 2.1). *UNC, Rare.*

Realised : ₹

Estimate: ₹ 10,000 - 12,000

239. **George VI**, Portrait Rupee 2, Sign: **J.B. Taylor** issued in 1943, (Jhun 2.1). *UNC, Rare.*

Realised : ₹

Estimate: ₹ 10,000 - 12,000

240. **George VI**, Portrait, Rupee 5, Sign: **J.B. Taylor**, Issued in 1938, (Jhun 3.1). *UNC, Rare.*

Realised : ₹

Estimate: ₹ 5,000 - 6,000

241. **George VI**, Portrait, Rupee 10, Sign: **J.B. Taylor**, Issued first in February 1938, (Jhun 5.1). *UNC Rare.*

Realised : ₹

Estimate: ₹ 8,000 - 10,000

242. **Persian Gulf Issue**, Rupee 10, Sign: **H.V.R. Iengar**, Issued in 1959, (Jhun 12.3.1). *Very Fine, Rare.*

Realised : ₹

Estimate: ₹ 16,000 - 18,000

243. **Persian Gulf Issue**, Rupee 100, Sign: **H.V.R. Iengar**, Issued in 1959, (Jhun 12.4.1). *Very Fine, Very Rare.*

Realised : ₹

Estimate: ₹ 1,00,000 - 1,25,000



233



234



235



236



237



238



239



243



38

244. **Rupees 1**, Full Packet, Sign: **S. Venkatraman**, year 1985, Number 786 701 to 786 800, including Fancy Number 786 786. *UNC, Very Rare.* (100 Notes)
- Realised : ₹ Estimate: ₹ 30,000 - 35,000
245. **Rupees 2**, Full Packet of 100 Notes number, starting from 000 001 to 000 100, Sign: **R.N. Malhotra**, few stain mark below number in few notes, *Extremely Fine Rare.*
- Realised : ₹ Estimate: ₹ 12,000 - 15,000
246. **Rupees 2**, Sign: **R.N. Malhotra**, Fancy Number 786 786, *About Extremely Fine.*
- Realised : ₹ Estimate: ₹ 8,000 - 10,000
247. **Rupees 5**, Sign: **C. Rangrajan**, Fancy Number 000 786, Slight ink mark on upper left corner. *UNC, Scarce.*
- Realised : ₹ Estimate: ₹ 3,000 - 4,000
248. **Rupees 5** (10), Sign: **R.N. Malhotra**, Fancy Number 111 111 to 100 0000, *mostly all UNC, Rare as set.* (10 Notes)
- Realised : ₹ Estimate: ₹ 18,000 - 22,000
249. **Rupees 5** (10), Sign: **R.N. Malhotra**, Fancy Number 100 000 to 100 0000, *Extremely Fine to UNC.* (10 Notes)
- Realised : ₹ Estimate: ₹ 10,000 - 12,000
250. **Rupees 5** (3), Sign: **Bimal Jalan**, Gandhi series, Fancy Number 000 786, 786 000 and 786 786, *UNC, Scarce.* (3 Notes)
- Realised : ₹ Estimate: ₹ 3,000 - 4,000
251. **Rupees 5** (2), Sign: **Bimal Jalan**, Gandhi series, Fancy Number 786 000 and 000 786, *UNC, Scarce.* (2 Notes)
- Realised : ₹ Estimate: ₹ 2,000 - 2,500
252. **Rupees 5** (10), Sign: **Bimal Jalan**, Gandhi series, Fancy No 786 000 to 786 010, *UNC, Scarce.* (10 Notes)
- Realised : ₹ Estimate: ₹ 1,500 - 1,800
253. **Rupees 5**(10), Sign: **Bimal Jalan**, Gandhi series, Fancy No 111 111 to 100 0000, *all UNC.* (10 Notes)
- Realised : ₹ Estimate: ₹ 14,000 - 16,000
254. **Rupees 5** (10), Sign: **Bimal Jalan**, Gandhi series, Fancy No 100 000 to 100 0000, (400 000 has some cress and 100 000 Sign: Y.V. Reddy), *all notes UNC, Scarce.* (10 Notes)
- Realised : ₹ Estimate: ₹ 7,000 - 8,000
255. **Rupees 10**, Sign: **B. Rama Rao**, Released on 26th January 1980, Value only in English in the Central Denomination Panel. *UNC.*
- Realised : ₹ Estimate: ₹ 4,000 - 5,000



244



245



246



247



248



249



250



251



252



253



254



256



257



258



259



261



267



268



260



262



263



264



265

256. **Rupees 10** (10), Sign: **C. Rangrajan**, Shalimar Baug, Fancy Number 111 111 to 100 0000. *Extremely Fine to UNC.* (10 Notes)
Realised : ₹ Estimate: ₹ 12,000 - 15,000
257. **Rupees 10** (10), Sign: **C. Rangrajan**, Shalimar Baug, Fancy Number 100 000 to 100 0000, (200 000 Sign: S.Venketraman), *About Extra Fine to Extremely Fine, Rare as a set.* (10 Notes)
Realised : ₹ Estimate: ₹ 8,000 - 10,000
258. **Rupees 10** (5), Sign: **Y.V. Reddy** and **Bimal Jalan**, Gandhi series, Fancy Number 786 786, all five different prefix. *UNC.* (5 Notes)
Realised : ₹ Estimate: ₹ 2,000 - 5,000
259. **Rupees 10** (10), Sign: **C. Rangrajan**, Gandhi series, Fancy Number 111 111 to 100 0000. *UNC, mega prefix 58 Q in all ten notes, Scarce as a set.* (10 Notes)
Realised : ₹ Estimate: ₹ 10,000 - 12,000
260. **Rupees 10** (19), Sign: **Three different governors**, Fancy Number 100 0000 all the notes are different types. It is very difficult to get 100 0000 no. 19 different notes. *UNC, Very Rare.* (19 Notes)
Realised : ₹ Estimate: ₹ 19,000 - 25,000
261. **Rupees 20** (3), Sign: **Bimal Jalan** and **Y.V. Reddy**, Gandhi series, Fancy Number 786 786, 786 000 and 000 786. *UNC, Scarce.* (3 Notes)
Realised : ₹ Estimate: ₹ 2,000 - 2,500
262. **Rupees 20** (19), Sign: **Y.V. Reddy**, Gandhi series, Fancy Number 100 000 to 900 000 and 111 111 to 100 0000. *UNC, Rare as a set.* (19 Notes)
Realised : ₹ Estimate: ₹ 10,000 - 12,000
263. **Rupees 100** (10), Sign: **Three different governors**, Agriculture series, Fancy Number 111 111 to 100 0000. *UNC, Rare as a set.* (10 Notes)
Realised : ₹ Estimate: ₹ 12,000 - 15,000
264. **Rupees 100** (10), Sign: **Y.V. Reddy**, Gandhi series, Fancy Number 100 000 to 100 0000. (No 300 000 is Sign: Bimal Jalan), mega prefix starting with 0 in all lots. *UNC, Very Rare as a set.* (10 Notes)
Realised : ₹ Estimate: ₹ 3,000 - 4,000
265. **Rupees 100** (10), Sign: **Y.V. Reddy**, Gandhi series, Fancy Number 100 000 to 100 0000. *UNC, Scarce.* (10 Notes)
Realised : ₹ Estimate: ₹ 3,000 - 4,000
266. **Rupees 100** (10), Sign: **Three Different Governors**, Gandhi series, Fancy Number 100 000 to 100 0000. *UNC, Scarce.* (10 Notes)
Realised : ₹ Estimate: ₹ 3,000 - 4,000
267. **Rupees 1000**, Sign: **K.R. Puri**, Bombay Circle issued in 1975, Black bank seal on Reverses. *Very Fine, Scarce.*
Realised : ₹ Estimate: ₹ 14,000 - 15,000
268. **Rupees 1000**, Sign: **N.C. Sengupta**, Bombay Circle issued in 1975, *About Extremely Fine, Scarce.*
Realised : ₹ Estimate: ₹ 18,000 - 20,000
269. **Rupees 1000**, Sign: **N.C. Sengupta**, Bombay Circle issued in 1975, *Very Fine, Scarce.*
Realised : ₹ Estimate: ₹ 13,000 - 15,000

End of Sale



52



59



104



105



128



163



149



150

TERMS OF AUCTION

1. This Sale is by public auction conducted by licensed auctioneer. The bids will be opened for bidding in numerical order. In the event that bids for the same amount are received for the same lot, the winning bid will be the earliest received. The decision of the Auctioneer as to identity of the winning bidder shall be final.
2. Any person submitting bids on behalf of a corporation or any other person /persons agree to be personally liable for full payment of the invoice.
3. No “buy” or unlimited bids will be accepted. No bids will be accepted from Minors. Bids lower than lower estimate will not be accepted.
4. Classical Numismatic Gallery reserve the right to postpone or cancel the auction without notice in its sole discretion. Any lot or lots may be withdrawn by Auctioneer without notice prior to its being opened for bidding. Auctioneer or the Consigner shall not be liable for any costs or damages arising from either the withdrawn of material at the auction or the delay or cancellation of the auction.
5. The Purchase price shall be the sum of winning bid and a buyer's premium of 10% plus applicable taxes has to be paid by the purchaser. The total Invoice amount shall be paid in full prior to delivery of the lot within 7 days of the date of invoice. The auctioneer reserve the right to charge the interest at the rate of 2% per month for the over due amount.
6. Payment shall be by cash in Indian Rupee (₹) by cheques/D.D. drawn on Indian banks. The purchase price shall be paid upon delivery of the lot or receipt of Invoice for the lot, whichever occurs first. All associated costs for the delivery of lots such as handling, shipping, insurance will be added to the purchase price.
7. Classical Numismatic Gallery reserves the right to place bids on behalf of the consigner up to the amount of a reserve price established by the consigner. Auctioneer will not accept a reserve price from a consigner above the high estimate shown in the catalogue for the auction. Auctioneer shall make maximum efforts to properly enter and execute bid received by E-mail, Fax or by other means. However, auctioneer shall not be liable for any errors for incorrectly entered or incorrectly executed bids. Bidders are responsible for their bids including any errors they may make in placing bids. Auctioneer reserve the right to refuse and reject unsigned bid sheet.
8. Lots are sold as shown with all faults, imperfections and errors of description. Neither the auctioneer nor the seller shall give warranty to any buyer in respect of any lot, or be liable for any fault or error of description. All statements as to the items sold, whether made in catalogues, during the course of the auction, or otherwise are statements of opinion only, and are not and shall not be taken to be statements or representations of fact. The auctioneer reserves the right in forming his opinion, to consult and rely upon any expert or authority considered by him reliable. Notwithstanding the forgoing, if any lot should have been wrongly described in any material aspect, the buyer may reject the same, provided that he shall have given notice of intention to do so and shall have returned the same to the auctioneer within seven (7) days from the day of the sale, Under no circumstances will the auctioneer be liable for any costs, expenses or damages incurred by the buyer in respect of any lot, including, but not limited to, loss of any kind of profit whatsoever. Bidders are advised to scrutinize the lots they bid for.
9. The auctioneer will not hold himself responsible for the safe custody of any lots left for more than seven (7) working days after the date of sale, and reserves the right to charge storage and re-sell by auction or privately, and without notice to the buyer, any lots not removed from his premises within fourteen (14) days from the date of sale. Buyers shall not be entitled to remove lots from the auction room during the course of the auction.
10. After the auction, if during the transit or due to any other reason if auction lot/lots are lost, than auctioneer is not liable to give the delivery of the said lot/lots.
11. Those bidders who have not paid their previous bills and also the bidders to whom auctioneer do not know, in such circumstances auctioneer has right to take the deposits from such bidders, and if they do not give deposits, auctioneer has right to prevent such bidder to take part in the auction.
12. The auctioneer has a right to ask for photo identification (ID) proof from the bidder, issued by government or semi government authorities.
13. Credit card Payments are subject to 2% surcharge, Master Card, Visa and American Express.
14. The estimate figure below each lot are the auctioneer's estimate of an expected price only bids which are less than the lower estimate will not be consider by the auctioneer.
15. The auction is conducted in (₹) **Indian Rupees**.
16. BY Making a bid the buyer acknowledges his acceptance of these Conditions and shall be bound by them.
17. These Conditions shall take effect and be construed in accordance with Indian law.
18. All items offered in this Auction Catalogue are guaranted to be genuine.
19. Subject to Ahmedabad Jurisdiction.

Statutory Notes:- Buyers are requested to note that the items over 100 years old cannot be taken out of India without the permission of Of the Director General, Archaeological Survey of India, Janpath, New Delhi 110 011.



216



217



218



224



225



226



228



231



267



CLASSICAL NUMISMATIC GALLERY

105, 3rd Eye Complex, C. G. Road, Panchvati, Ahmedabad - 380 006. Gujarat, INDIA.

Tel : +91 (0) 79 2646 4850, +91 (0) 79 2646 4851 / Fax : +91 (0) 79 2646 4852

Web : www.classicalnumismaticgallery.com

Email : info@classicalnumismaticgallery.com